

RX 60 Technical Data

Electric Forklift Truck

[RX 60-25/Li-Ion](#)

[RX 60-25/600/Li-Ion](#)

[RX 60-25L/600/Li-Ion](#)

[RX 60-30/Li-Ion](#)

[RX 60-30L/Li-Ion](#)

[RX 60-30L/600/Li-Ion](#)

[RX 60-35L/Li-Ion](#)



RX 60-25/35 Electric Forklift Truck
The Accelerator

This specification sheet, which conforms to VDI guideline 2198, provides the technical values for the standard equipment only.
Different tyres, other masts, the use of accessories, etc. may result in other values.



		STILL	STILL	STILL	STILL	STILL	STILL	STILL	STILL		
Distinguishing marks	1.1	Manufacturer									
	1.2	Manufacturer's type designation		RX 60-25/Li-Ion	RX 60-25/600/Li-Ion	RX 60-25L/600/Li-Ion	RX 60-30/Li-Ion	RX 60-30L/Li-Ion	RX 60-30L/600/Li-Ion	RX 60-35L/Li-Ion	
		Manufacturer model number		6301	6302	6304	6305	6307	6308	6309	
	1.3	Drive		Electric	Electric	Electric	Electric	Electric	Electric	Electric	
	1.4	Operation		Seated	Seated	Seated	Seated	Seated	Seated	Seated	
	1.5	Load capacity/load	Q	kg	2500	2500	2500	3000	3000	3500	
	1.6	Load centre	c	mm	500	600	600	500	500	600	
	1.8	Load spacing	x	mm	455	460	460	468	468	468	
	1.9	Wheel base	y	mm	1645	1645	1797	1652	1797	1797	
Weights	2.1	Service weight incl. battery		kg	4599	4821	5019	5040	5063	5308	
	2.2	Axle load, laden	front/rear	kg	6317/782	6421/900	6478/1041	7163/877	7257/806	7419/889	
	2.3	Axle load, unladen	front/rear	kg	2370/2229	2315/2506	2508/2511	2411/2629	2646/2417	2641/2667	
Tyres/chassis	3.1	Tyres			Superelastic	Superelastic	Superelastic	Superelastic	Superelastic	Superelastic	
	3.2	Tyre size	front	mm	225/75-10 (23x9-10)	225/75-10 (23x9-10)	225/75-10 (23x9-10)	250/60-12 (23x10-12)	250/60-12 (23x10-12)	315/45-12	
	3.2	Tyre size	rear	mm	180/70-8 (18x7-8)	180/70-8 (18x7-8)	180/70-8 (18x7-8)	180/70-8 (18x7-8)	180/70-8 (18x7-8)	180/70-8 (18x7-8)	
	3.5	Number of wheels (x = driven)	front/rear			2x/2	2x/2	2x/2	2x/2	2x/2	
	3.6	Track width	front/rear	b ₁₀ /b ₁₁	mm	992/900	992/900	992/900	950/900	950/900	1002/900
	4.1	Angle of mast/fork carriage	forward/backward	α/β	°	7/7	7/7	7/7	7/7	7/7	7/7
Basic dimensions	4.2	Height of mast	retracted/extended	h ₁ /h ₄	mm	2225/3700	2225/3700	2225/3700	2225/3850	2225/3850	2225/3850
	4.3	Free lift		h ₂	mm	160	160	160	160	160	160
	4.4	Lift ¹		h ₃	mm	3066	3066	3066	3066	3066	3066
	4.7	Height above protective roof (low variant)		h ₆	mm	2226 (2135)	2225 (2135)	2225 (2135)	2225 (2135)	2225 (2135)	2225 (2135)
	4.8	Seat height in relation to SIP (low variant)		h ₇	mm	1235 (1195)	1235 (1195)	1235 (1195)	1235 (1195)	1235 (1195)	1235 (1195)
	4.12	Coupling height		h ₁₀	mm	484	484	484	484	484	484
	4.19	Total length		l ₁	mm	3410	3615	3767	3430	3575	3775
	4.20	Length including fork backs		l ₂	mm	2410	2415	2567	2430	2575	2575
	4.21	Total width		b ₁	mm	1199	1199	1199	1199	1199	1299
	4.22	Fork dimensions		s/e/l	mm	40/100/1000	45/100/1200	45/100/1200	50/100/1000	50/100/1000	50/100/1200
	4.23	Fork carriage ISO 2328, Class/form A, B				ISO II A	ISO II A	ISO II A	ISO III A	ISO III A	ISO III A
	4.24	Fork carriage width		b ₃	mm	1150	1150	1150	1150	1150	1150
	4.31	Ground clearance under mast, with load		m ₁	mm	116	116	116	114	116	115
	4.32	Ground clearance centre wheel base		m ₂	mm	127	126	126	126	125	126
	4.34.1	Working aisle width with pallet 1000 x 1200 crossways ^{3,4}		A _{st}	mm	3700	3705	3905	3742	3913	3941
	4.34.2	Working aisle width with pallet 800 x 1200 lengthways ^{3,4}		A _{st}	mm	3890	3895	4116	3940	4124	4141
	4.35	Turning radius		W _a	mm	2035	2035	2245	2070	2245	2273
	4.36	Smallest pivoting distance		b ₁₃	mm	428	428	593	491	593	649
	Performance data	5.1	Driving speed (Blue-Q/standard/sprint)	with/without load	km/h	18/18/20 // 18/18/21	18/18/20 // 18/18/21	18/18/20 // 18/18/21	18/18/20 // 18/18/21	18/18/20 // 18/18/21	18/18/20 // 18/18/21
		5.2	Lifting speed (high/standard performance)	with/without load	m/s	0.65/0.56 // 0.66/0.60	0.65/0.56 // 0.66/0.60	0.65/0.56 // 0.66/0.60	0.57/0.49 // 0.57/0.51	0.57/0.49 // 0.57/0.51	0.53/0.44 // 0.57/0.51
		5.3	Lowering speed	with/without load	m/s	0.50/0.45	0.50/0.45	0.50/0.45	0.50/0.43	0.50/0.43	0.50/0.43
5.5		Drawbar pull (high/standard performance) ⁵	with load	N	10800/8140	10760/8016	10720/7985	10430/7740	10490/7737	10400/7695	
5.5		Drawbar pull (high/standard performance) ⁵	without load	N	10760/8100	10670/8110	10690/8110	10720/8100	10730/8106	10686/8055	
5.6		Max. drawbar pull (high/standard performance) ⁵	with load	N	21360/17390	21340/17370	21311/17354	20990/17020	20990/17020	20960/16990	
5.6		Max. drawbar pull (high/standard performance) ⁵	without load	N	18125/17120	17636/17073	18370/17071	18360/17140	20250/17156	20160/17117	
5.7		Gradeability (high/standard performance) ⁵	with load	%	23.5/17.1	22.6/16.5	22.0/16.0	20.1/14.6	20.1/14.6	19.4/14.1	
5.7		Gradeability (high/standard performance) ⁵	without load	%	29.5/26.6	27.4/27.4	28.0/24.2	27.4/24.2	30.6/24.1	29.1/22.8	
5.8		Max. gradeability (high/standard performance) ⁵	with load	%	31.9/25.5	30.8/24.7	30/24	27.4/21.9	27.3/21.9	26.4/21.1	
5.8	Max. gradeability (high/standard performance) ⁵	without load	%	29.5/29.5	27.4/27.5	28/29.2	27.4/27.4	30.6/30.6	29.1/29.1		
5.9	Acceleration time 15 m (high/standard performance)	with load	s	5.4/6.5	5.4/6.5	5.5/6.6	5.5/6.6	5.5/6.6	5.7/6.3		
5.9	Acceleration time 15 m (high/standard performance)	without load	s	5.0/5.5	5.0/5.5	5.0/5.6	5.0/5.6	5.0/5.6	5.0/5.4		
5.10	Service brake				Hydraulically actuated disc brake	Hydraulically actuated disc brake	Hydraulically actuated disc brake	Hydraulically actuated disc brake	Hydraulically actuated disc brake	Hydraulically actuated disc brake	
Electric engine	6.1	Drive motor, output with S2 60 min (high/standard performance)		kW	2x 10.5/2x 8.5	2x 10.5/2x 8.5	2x 10.5/2x 8.5	2x 10.5/2x 8.5	2x 10.5/2x 8.5	2x 10.5/2x 8.5	
	6.2	Lifting motor, output with S3 15% (high/standard performance)		kW	25/20	25/20	25/20	25/20	25/20	25/20	
	6.3	Battery according to DIN43531/35/36 A, B, C, no			DIN 43536 A	DIN 43536 A	DIN 43536 A	DIN 43536 A	DIN 43536 A	DIN 43536 A	
	6.4	Battery voltage	U	V	80	80	80	80	80	80	
	6.4.1	Battery capacity	K _s	Ah	560 (620)	560 (620)	700 (775)	560 (620)	700 (775)	700 (775)	
	6.5	Battery weight		kg	1558	1558	1863	1558	1863	1863	
	6.6	Energy consumption EN 16796 (high/standard performance)		kWh/h	6.0/6.0	6.2/6.2	6.3/6.3	6.6/6.5	6.6/6.6	6.7/6.7	
	6.7	Handling rate (High/Standard Performance)		t/h	176/169	176/169	176/169	228/222	228/222	258/245	
6.8	Energy consumption at handling rate (high/standard performance)		kWh/h	7.1/6.6	7.2/6.8	7.4/6.9	7.8/7.3	7.8/7.3	8.0/7.5		
Misc.	10.1	Working pressure for accessory equipment		bar	250	250	250	250	250	250	
	10.2	Oil volume for accessory equipment		l/min	46	46	46	46	46	46	
	10.7	Sound pressure level L _{paz} (operator's position) ²		dB(A)	70	70	70	70	70	70	
	10.7.1	Human vibrations: acceleration in accordance with EN 13059		m/s ²	0.57	0.57	0.57	0.57	0.57	0.57	
10.8	Trailer coupling, item/DIN type			Bolt	Bolt	Bolt	Bolt	Bolt	Bolzen		

¹ The specified nominal lift takes into consideration the tyre deflection and tolerances of the tyre diameter.

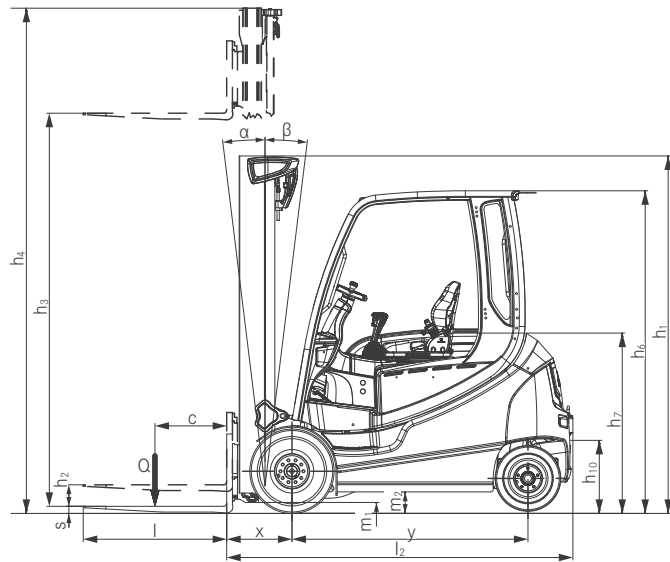
² Without cab. Different values with cab.

³ Fork overhang not included.

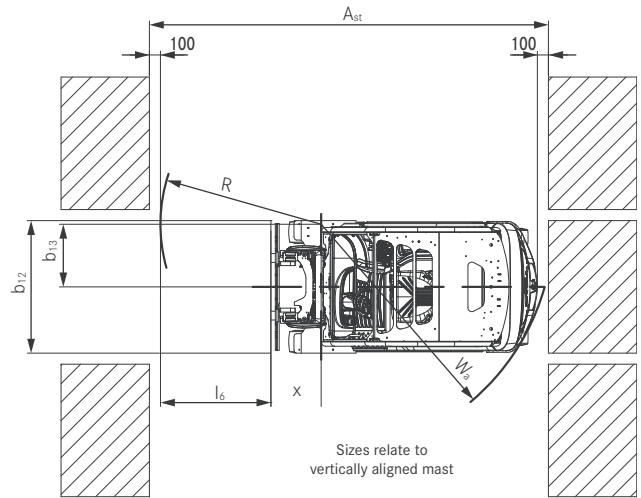
⁴ For telescopic, HiLo and triplex mast.

⁵ For the complete forklift truck system.

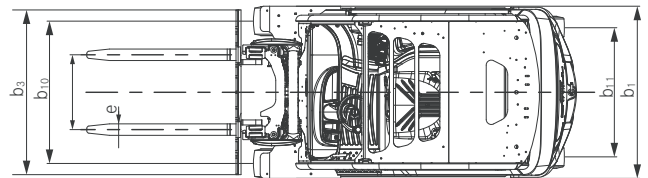
RX 60-25/35 Electric Forklift Truck
 Technical Drawings



Side view



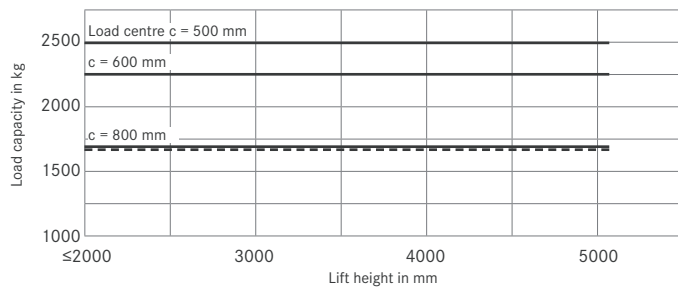
Top view



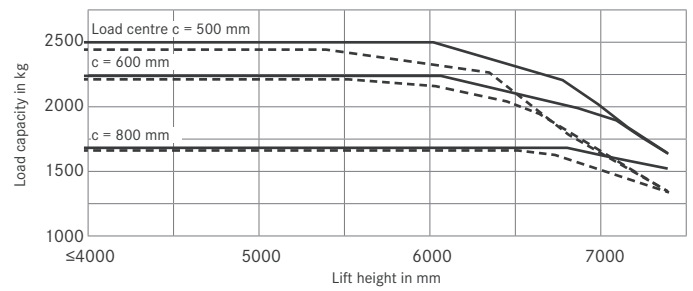
Top view

Basic Load Capacities

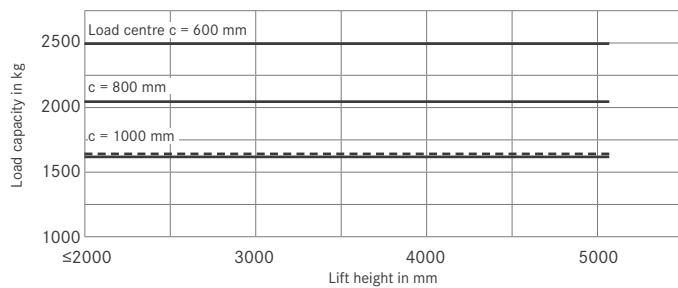
RX 60-25 Telescopic/HiLo mast



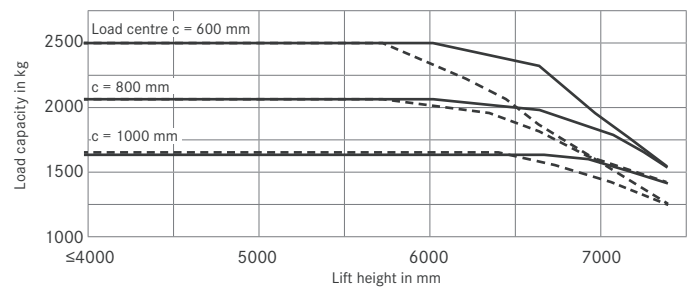
RX 60-25 Triplex mast



RX 60-25/600 Telescopic/HiLo mast



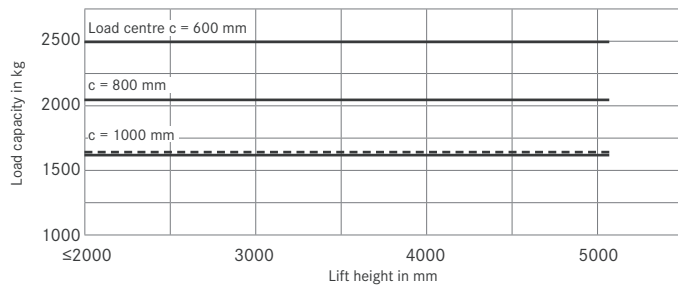
RX 60-25/600 Triplex mast



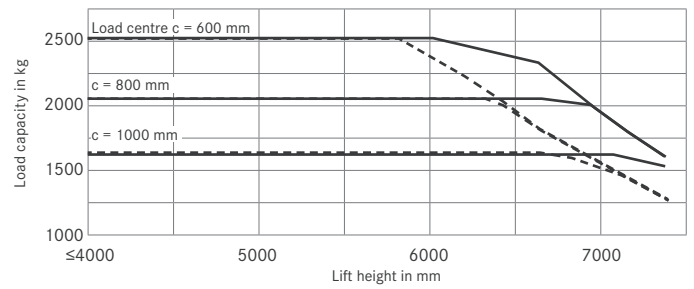
RX 60-25/35 Electric Forklift Truck

Basic Load Capacities

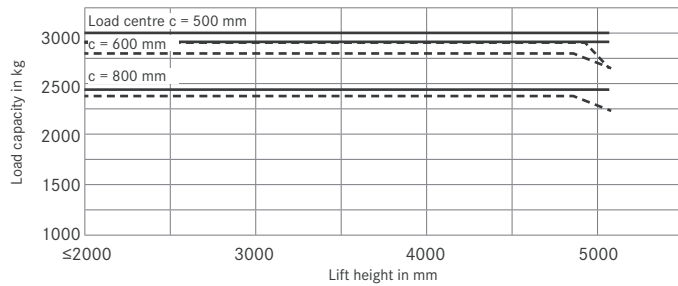
RX 60-25L/600 Telescopic/HiLo mast



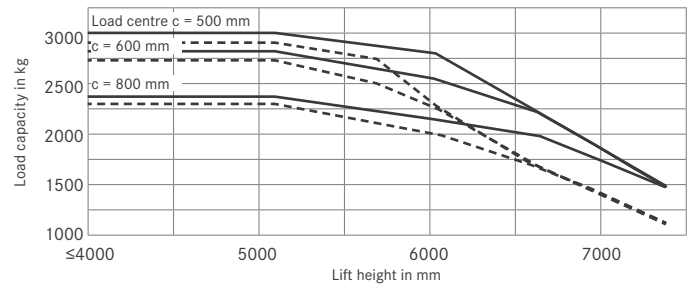
RX 60-25L/600 Triplex mast



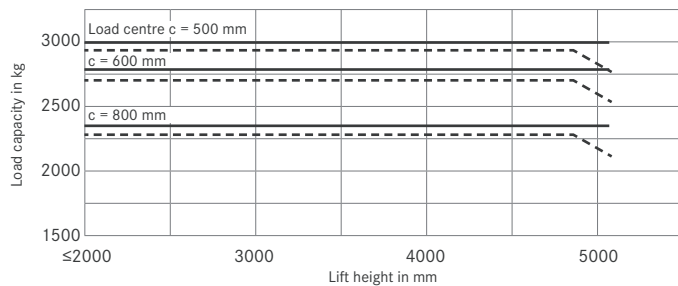
RX 60-30 Telescopic/HiLo mast



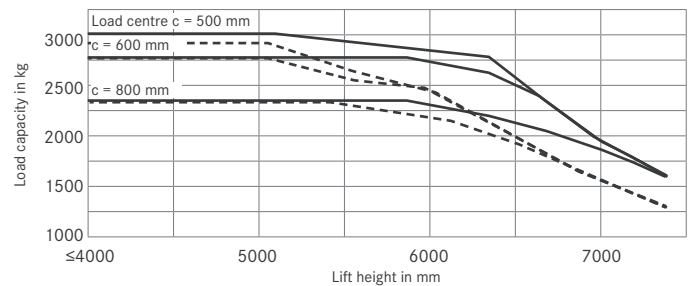
RX 60-30 Triplex mast



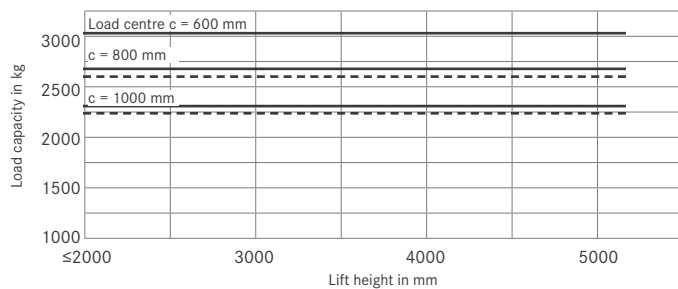
RX 60-30L Telescopic/HiLo mast



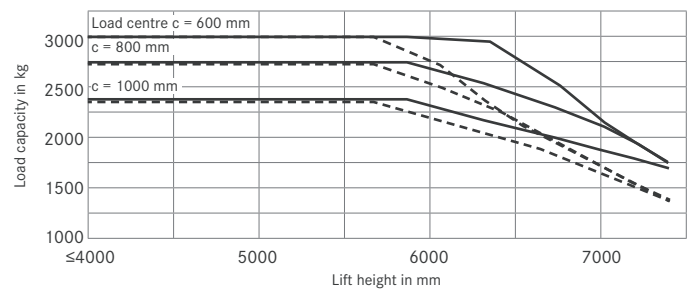
RX 60-30L Triplex mast



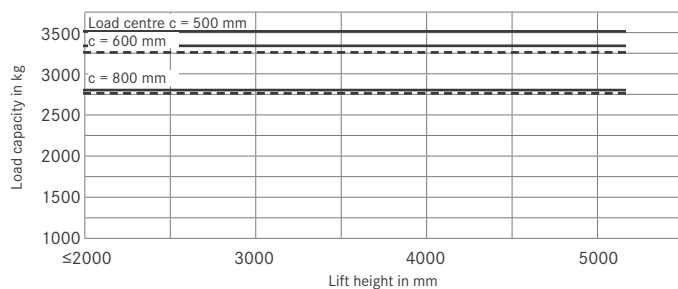
RX 60-30L/600 Telescopic/HiLo mast



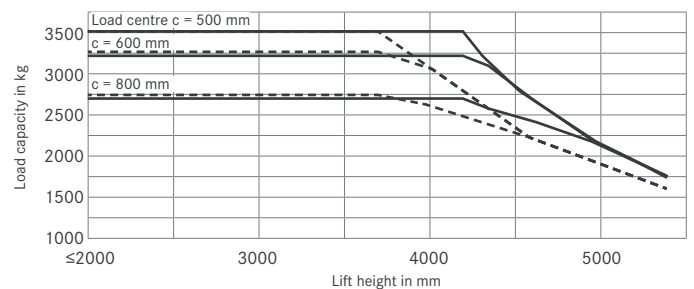
RX 60-30L/600 Triplex mast



RX 60-35L Telescopic/HiLo mast



RX 60-35L Triplex mast



— without side shifter - - - with fitted side shifter

RX 60-25/35 Electric Forklift Truck
Mast Tables



				Telescopic mast										HiLo mast						Triplex mast											
				2770	2870	3020	3170	3270	3670	4170	4570	5070	2890	2990	3090	3290	3690	4090	4590	4290	4440	4590	4890	5190	5390	5540	6040	6640	7390		
RX 60-25	RX60-25	Nominal lift	h_3	mm	2770	2870	3020	3170	3270	3670	4170	4570	5070	2890	2990	3090	3290	3690	4090	4590	4290	4440	4590	4890	5190	5390	5540	6040	6640	7390	
		Height	h_1	mm	2075	2125	2200	2275	2325	2525	2775	2975	3225	2075	2125	2175	2275	2475	2675	2925	2075	2125	2175	2275	2375	2475	2525	2725	2925	3175	
		Free lift 4 roller fork carriage	h_2	mm	160	160	160	160	160	160	160	160	160	160	1443	1493	1543	1643	1843	2043	2293	1443	1493	1543	1643	1743	1843	1893	2093	2293	2543
		Max. height, 4 roller fork carriage	h_4	mm	3406	3506	3656	3806	3906	4306	4806	5206	5706	3548	3648	3748	3948	4348	4748	5248	4961	5111	5261	5561	5861	6061	6211	6711	7311	8061	
		Tilt angle	forward/backward	α/β	7/7										7/7						7/7										
	Adjustable fork spread		mm	216/368/445/521/673/760										216/368/445/521/673/760						216/368/445/521/673/760											
	Tyres	rear	mm	180/70-8										180/70-8						180/70-8											
	Track	rear		900										900						900											
	Tyres (standard performance)	front		225/75-10										225/75-10						225/75-10											
	Tracks (standard performance)	front		992										992						992											
	Maximum width (standard performance)			1200										1200						1200											
	Tyres (high performance)	front		250/60-12										250/60-12						250/60-12											
	Track (high performance)	front		952										952						952											
	Maximum width (high performance)			1200										1200						1200											
	RX 60-30/35	RX60-30 RX60-30L	Nominal lift	h_3	mm	2770	2870	3020	3170	3270	3670	4170	4570	5070	2890	2990	3090	3290	3690	4090	4590	4290	4440	4590	4890	5190	5390	5540	6040	6640	7390
Height			h_1	mm	2075	2125	2200	2275	2325	2525	2775	2975	3225	2075	2125	2175	2275	2475	2675	2925	2075	2125	2175	2275	2375	2475	2525	2725	2925	3175	
Free lift 4 roller fork carriage			h_2	mm	160	160	160	160	160	160	160	160	160	160	1440	1490	1540	1640	1840	2040	2290	1440	1490	1540	1640	1740	1840	1890	2090	2290	2540
Max. height, 4 roller fork carriage			h_4	mm	3409	3509	3659	3809	3909	4309	4809	5209	5709	3551	3651	3751	3951	4351	4751	5251	4964	5114	5264	5564	5864	6064	6214	6714	7314	8064	
Tilt angle			forward/backward	α/β	7/7										7/7						7/7										
Adjustable fork spread			mm	216/368/445/521/673/760										216/368/445/521/673/760						216/368/445/521/673/760											
Tyres		rear		180/70-8										180/70-8						180/70-8											
Track		rear		900										900						900											
Tyres (standard performance)		front		250/60-12										250/60-12						250/60-12											
Tracks (standard performance)		front		952										952						952											
Maximum width (standard performance)				1200										1200						1200											
Tyres (high performance)		front		315/45-12										315/45-12						315/45-12											
Track (high performance)		front	mm	1004										1004						1004											
Maximum width (high performance)		b_1	mm	1303										1303						1303											
RX 60-30L/600 RX 60-35L		Tyres	rear		180/70-8										180/70-8						180/70-8										
	Tyres	front		315/45-12										315/45-12						315/45-12											
	Track	front/rear		1004/900										1004/900						1004/900											
	Maximum width	b_1	mm	1303										1303						1303											

Gradients

Maximum distance that can be driven in 60 minutes.

Example: with a load of 2,500 kg and an gradient of 15%, an RX 60-25 (standard performance)

can drive a distance of 610 m up to ten times per hour.

Standard Performance	Gradient	Maximum distance in m							
		RX 60-25	RX 60-25/600	RX 60-25L/600	RX 60-30	RX 60-30L	RX 60-30L/600	RX 60-35L	
With load	20%	810	790	770	730	720	690	610	
	15%	6100	6000	5800	5200	5180	5050	4350	
	10%	7550	7390	7340	7140	7140	6790	6500	
	5%	10400	10300	10200	10100	10100	9850	9600	
Without load	25%	1250	1210	1170	1110	1100	1070	980	
	20%	6850	6710	6610	6570	6550	6460	6280	
	15%	9900	9600	9400	9360	9350	9290	9200	
	10%	12580	12450	12350	12340	12330	12240	12100	

High Performance	Gradient	Maximum distance in m							
		RX 60-25	RX 60-25/600	RX 60-25L/600	RX 60-30	RX 60-30L	RX 60-30L/600	RX 60-35L	
With load	20%	2350	2150	2080	1860	1850	1420	1250	
	15%	5600	5305	5130	4620	4630	4440	4200	
	10%	9120	8910	8710	8130	8120	7910	7240	
	5%	14270	14180	14020	13300	13200	12800	12000	
Without load	25%	1500	1410	1380	1380	1380	1310	1210	
	20%	7820	7470	7110	7090	7080	6770	6460	
	15%	13690	12880	12630	12580	12440	11960	11610	
	10%	17400	17100	16980	16780	16760	16690	16480	

Dry rough concrete = coefficient of friction 0.80
Battery: standard as per specification sheet
Speed is variable

RX 60-25/35 Electric Forklift Truck
Detailed Photos



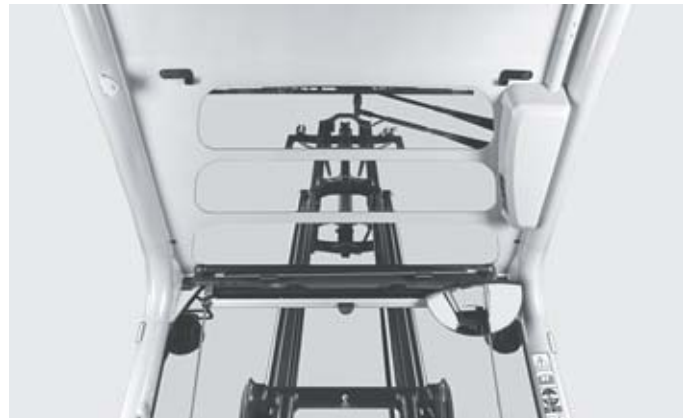
Full cab for outdoor use in all weathers



Optimum availability due to fast and safe battery change



Slim mast ensures excellent view of the forks and extremely high safety standards



Safe and precise loading and unloading thanks to clear view forwards and upwards



Spacious driver's workstation for safe, fatigue-free working



Excellent view of the prongs



High level of safety thanks to large, non-slip steps for easy entry



Safe, intuitive operation with the STILL Easy Control display and control module

RX 60-25/35 Electric Forklift Truck
The Accelerator



RX 60-25/35 Electric Forklift Truck The Accelerator

Exceptional performance: highest handling performance of its class

Easily accessible: highest range with one battery charge

Ideal workstation: spacious cabin with STILL Easy Control on-board computer



Make the most of the smart performance offered by an exceptional accelerator. Right from the start the RX 60-25/35 will win over any operator with its perfect balance of power, ergonomics, manoeuvrability and energy efficiency. It is not only a high performer – it is one of the very best: the RX 60-25/35 boasts optimum handling rates in weight classes of up to 3.5 tonnes. At the same time, this intralogistics powerhouse can reach speeds of 21 km/h and is a top performer when it comes to range, offering the highest range per battery charge in this segment. Choose our STILL lithium-ion technology and you can run three shifts with your forklift truck without a replacement battery.

Whatever your needs, the RX 60 can be operated intuitively and precisely in any situation. And thanks to the quick-start mode, this nimble truck is ready to start work as soon as you sit down in the spacious driver's cab. Here, you will also find yet another outstanding feature – the STILL Easy Control on-board computer. This tool gives you direct access to key performance functions and provides a constant overview of all the relevant vehicle information. Go electric with a forklift truck that delivers the very best performance every second and in every application.

The 'Simply Efficient' factors: Performance attributes as a measure of economic efficiency



Simply easy

- Intuitive handling: standard, easy-to-use operating concept across the whole RX product line
- Efficiency-enhancing: easy entry into a highly ergonomic driver's cab
- STILL Easy Control on-board computer: all relevant information at a glance and performance functions just a click away
- Ultra-fast: easy-to-operate lateral battery change



Simply powerful

- Intralogistics powerhouse: highest handling performance of its class
- Performance boost: sprint mode for peak performance at the touch of a button
- Optimum energy efficiency: exceptionally long range with each battery charge
- Lift and accelerate faster than ever: available as a high performance variant with extra-powerful drive and lift motors
- Intelligent support: traction control and other assistance functions
- Ready at all times: optional STILL lithium-ion technology for maximum availability



Simply safe

- Safe and precise handling: high-precision hydraulics and agile driving dynamics
- Safe entry: large handle, anti-slip rubber mat and wide step
- Optimal panoramic view: slim mast and extra-large windows
- Systematic safety: optional pre-shift check on the display to help with the daily safety inspection
- Safety for every application: wide range of additional equipment options – from a direction indicator on the display to the Safety Light 4Plus safety lighting, as well Curve Speed Control for automatic speed reduction when cornering



Simply flexible

- Flexible control options: multi-lever, mini-lever, Fingertip or Joystick 4Plus
- Adjustable performance dynamics: parameters such as driving and lifting speed can be adjusted to personal preferences at the touch of a button
- Operating power tailored to your specifications: wide variety of equipment options for every application



Simply connected

- Optimum networking: optional interface for integration into fleet management software such as STILL neXXt fleet
- Controlled use: optional access control protects against incorrect operation

RX 60-25/35 Electric Forklift Truck

Equipment Variants



	RX 60-25/-30	RX 60-30L/-35L	RX 60-25/-25L/-30L mit LSP 600 mm
	●	●	●
Operating costs kept low thanks to low energy consumption and long service intervals	●	●	●
Weather-protected, canvas or full cab	○	○	○
Drive-in overhead guard with makrolon roof	○	○	○
Driver cab suitable for container loading (height: approx. 2135 mm)	○	○	○
Tinted front windscreen, rear and roof windows made of either green-tinted or makrolon laminated safety glass, plus windscreen wiper and wash system	○	○	○
Built-in storage and drink holder	●	●	●
Splash-proof operating unit featuring colour display, function buttons and menu navigation	●	●	●
Pad with clipboard (removable)	○	○	○
MSG 65 Grammer seat with leatherette cover	●	●	●
Seat with textile cover, airsprung, leatherette cover, lumbar support, height-adjustable back extension, heated seat	○	○	○
Swivel seat can be rotated to the right	○	○	○
Grab handle on front and back of protective roof	●	●	●
Horizontal spring plate for driver's seat to minimise human vibrations	○	○	○
Radio/MP3 player with USB connection and Bluetooth	○	○	○
Electrical heating 2000 W incl. defrosting blaster	○	○	○
Air conditioning	○	○	○
Dual-pedal control	○	○	○
Adjustable roof window for instant cabin ventilation	○	○	○
Cold store variant, hydraulic oil suitable for low temperature ranges	○	○	○
Clamp mount for mobile phone, mounted adjustably on the overhead guard bar	○	○	○
On-board computer with colour display and menu navigation	●	●	●
Free view mast available in telescopic, HiLo and triplex versions	○	○	○
Load backrest	○	○	○
Mast vertical position at the push of a button	○	○	○
Hydraulic accumulator in the lifting cylinder to attenuate pressure peaks in the hydraulic system	○	○	○
Bellows protect the tilt cylinder from dust and moisture	○	○	○
Fork wear protection	○	○	○
Display showing tilt angle and cushioned lowering in the tilt end positions	○	○	○
Tyres	●	●	●
Single tyres, superelastic, SIT system	●	●	●
Single tyres, natural colours, superelastic, SIT system	○	○	○
Twin tyres, superelastic, SIT system, black or natural colours	○	○	○
Proportional valve technology for especially sensitive movements	○	○	○
Hydraulics	●	●	●
Individual parametrisation options for hydraulic functions	●	●	●
Multi-lever operation	●	●	●
Armrest with mini-levers, Fingertip or Joystick 4Plus	○	○	○
Shake function for easy tipping of containers	○	○	○
Drives	●	●	●
Three fixed and two freely configurable driving programs, Blue-Q energy saving mode	●	●	●
Display showing energy consumption and remaining driving time based on current charge	●	●	●
Maintenance-free drives for driving, steering and lifting; components enclosed to protect against dust and moisture	●	●	●
Li-Ion battery exchangeable 1:1	○	○	○
Sprint mode for highest handling performance at the push of a button	●	●	●
Brake	●	●	●
Wear-free disc brakes that run in an oil bath	●	●	●
Energy recovery when braking	●	●	●
Automatic, electro-hydraulic parking brake	●	●	●
Safety	●	●	●
Low centre of gravity and steering axle with high self-aligning bearing for optimum levels of safety	●	●	●
Protective grille roof	○	○	○
EasyBelt restraint system for quick and safe fastening and unfastening	○	○	○
Sauermann restraint system model Duo HRS-E/ERS or IWS restraint system with left-located strap opening	○	○	○
Headlights and LED lighting performance	○	○	○
LED floodlight headlights	○	○	○
Driver-adjusted speed limiter	○	○	○
STILL Safety Light 4Plus warning device	○	○	○
Curve Speed Control	●	●	●
Load measuring	○	○	○
Panoramic mirror	○	○	○
Direction can be changed both left- and right-handed via mini-console	○	○	○
FleetManager: access authorisation, shock detection, reports	○	○	○
Overload detection	○	○	○
Pre-shift check in truck display	○	○	○
Intelligent seat belt control with logic check	●	●	●
Safety Light 4Plus	○	○	○
Rockinger trailer coupling	○	○	○
Approved for road use	○	○	○
Explosion-proof variant	○	○	○
STILL warning zone light	○	○	○

● Standard ○ Option



STILL GmbH
Berzeliusstraße 10
D-22113 Hamburg
Tel.: +49 (0)40/73 39-20 00
Fax: +49 (0)40/73 39-20 01
info@still.de

For further information please visit:
www.still.eu

STILL is certified in the following areas: Quality management, occupational safety, environmental protection and energy management.



first in intralogistics