

# Order picking truck 2.0 ton

## BT optio

*L-series*

OSE200X

*Remote drive*



## TOYOTA

MATERIAL HANDLING

stronger together

# Order picking truck

Truck specifications						OSE200X
Identification	1.1	Manufacturer				BT
	1.2	Model				OSE200X, Remote drive
	1.3	Drive				electric
	1.4	Operator type				stand on
	1.5	Load capacity/rated load	Q	kg		2000
	1.6	Load centre	c	mm		1200
	1.8	Load distance, back of fork to bogie wheel centre	x	mm		1485
	1.9	Wheelbase, short/long chassis	y	mm		2690 / 2776
Weight	2.1	Service weight without battery, short/long chassis		kg		1201/1225
	2.2	Axle load, with load, drive/castor/fork wheels				
		short chassis		kg		780/836/943
		long chassis		kg		680/673/1144
	2.3	Axle load, without load, drive/castor/fork wheels				
		short chassis		kg		597/500/339
Wheels		long chassis		kg		746/570/293
	3.1	Drive/castor/fork wheels				Powerfriction/Vulkollan/Vulkollan
	3.2	Wheel size, front		mm		Ø 250x105
	3.3	Wheel size, rear		mm		Ø 85x75
	3.4	Additional wheels (dimensions)		mm		Ø 150x75
Dimensions	3.5	Wheels, number front/rear (x=driven wheels)		mm		1x +1/4
	4.2.1	Overall height	$h_{15}$	mm		1370
	4.4	Lift	$h_3$	mm		710
		Lift height	$h_{23}$	mm		800
	4.8	Stand height, min./max.	$h_7$	mm		138
	4.15	Height, fork lowered	$h_{13}$	mm		90
	4.19	Overall length, short/long chassis	$l_1$	mm		3916/4002
	4.20	Length to face of forks, short/long chassis	$l_2$	mm		1566/1652
	4.21	Overall width	$b_1$	mm		790
	4.22	Fork dimensions	s/e/l	mm		70/180/2350, 2850
	4.25	Width over forks	$b_5$	mm		550 - 570
	4.31	Ground clearance	$m_1$	mm		23
	4.34	Aisle width for pallets 800 x 1200 lengthways	$A_{st}$	mm		4035
	4.35	Turning radius, short/long chassis	$W_a$	mm		2836/2922
	4.44	Clear width driver compartment entrance	$l_{24}$	mm		450
Performance data	5.1	Travel speed, with/without load <sup>1)</sup>		km/h		8,5/12,0
	5.1.1	Travel speed with remote drive		km/h		2,5/2,5
	5.2	Lift speed, with/without load		m/s		0,07/0,12
	5.3	Lowering speed, with/without load		m/s		0,12/0,12
	5.8	Max. gradeability, with/without load <sup>1)</sup>		%		5/5
	5.10	Service brake				Electromagnetic
Electric motor	6.1	Drive motor rating S2 60 min		kW		2,8
	6.2	Lift motor rating S3 7%		kW		2,0
	6.4	Battery voltage, nominal capacity $K_s$		V/Ah		24/620
	6.5	Battery weight, min./max.		kg		239-501
	6.6	Energy consumption acc to VDI cycle <sup>2)</sup>		kWh/h		60
Other	8.1	Type of drive control				BT Powerdrive
	8.4	Sound level at the driver's ear according to EN 12 053		dB(A)		

1) Measured according to company standard.

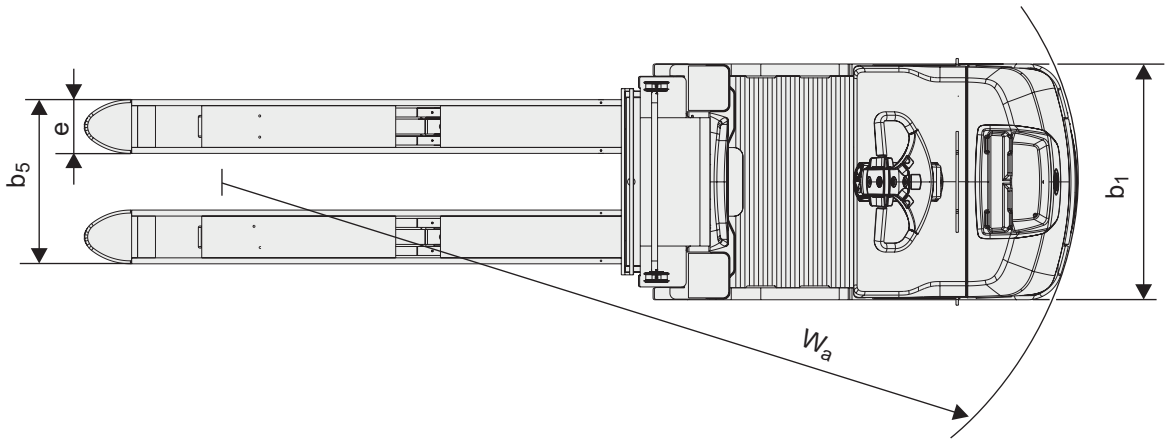
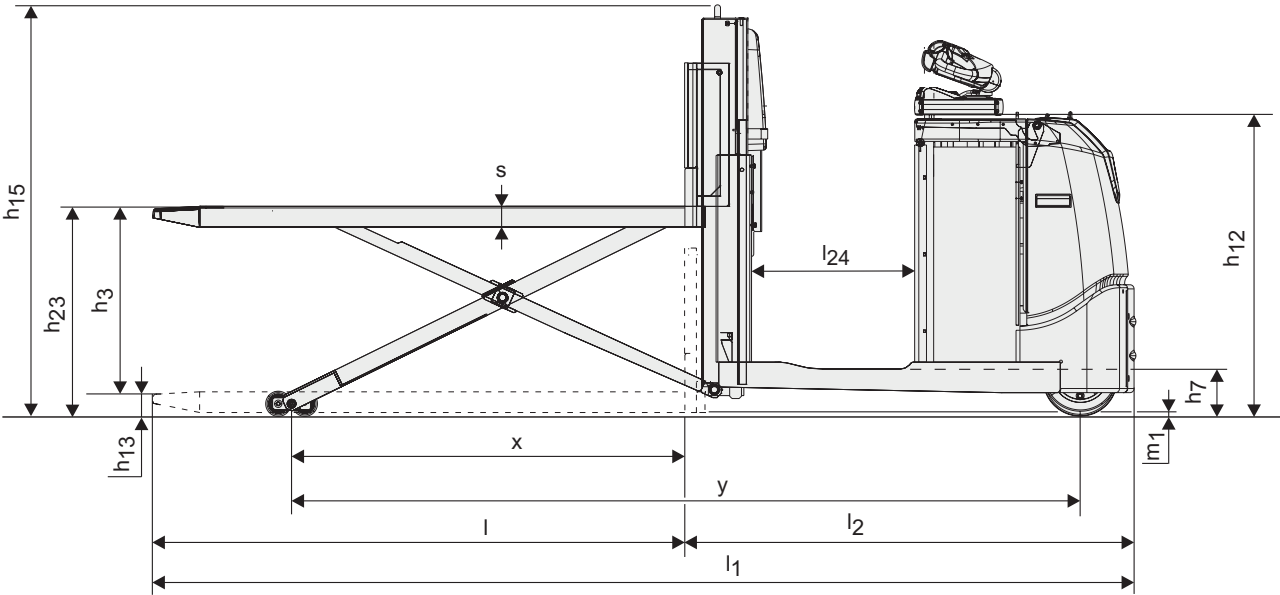
2) Contact your supplier for information.

\*) Values are for 620Ah battery. Other batteries will give other values.

All data are based on table configuration. Other configurations may give other values.

Truck performance and dimensions are nominal and subject to tolerances.

BT products and specifications are subject to change without notice.



## Truck features:

- High performance models
- High capacity, high lifting forks
- Remote drive function (incl. remote control to drive the truck remotely, safety scanner and warning light)
- BT E-man steering concept
- Low step-in
- BT Powerdrive system
- Integrated shrink film holder
- Streamlined administration  
— E-bar concept (option)
- Frequency adapted suspension (option)
- Automatic height adjustment

